

## APP monitoring data calibration instructions



**Please follow these 9 steps:**

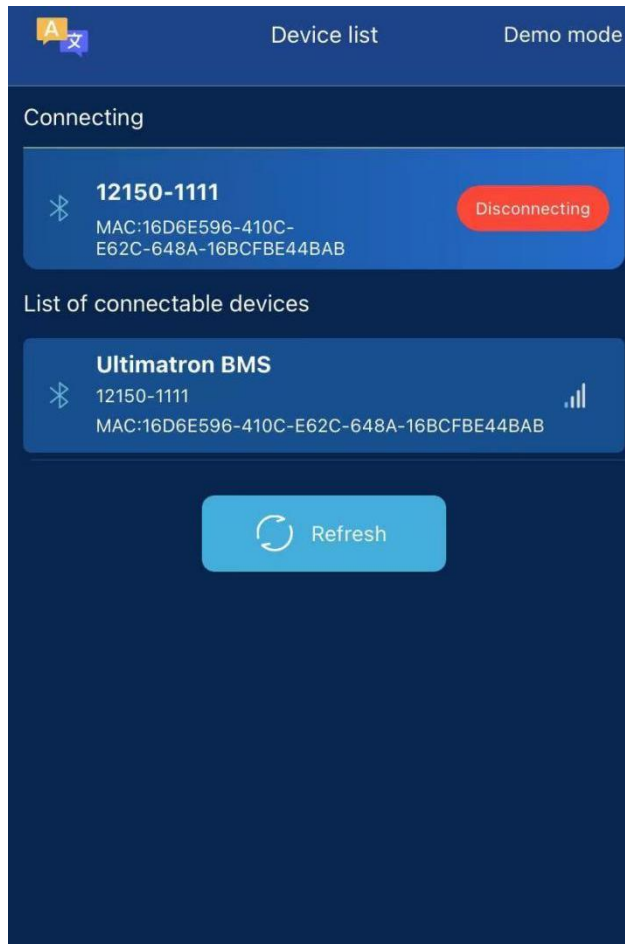
*Note: Please do not have any operations other than these instructions on your battery. If the battery is damaged after wrong operation, it is not covered by the warranty !*

*Attention: This operation can only be done once, please be sure to strictly follow these instructions ! Please do not modify the device name of the battery without the permission of the manufacturer.*

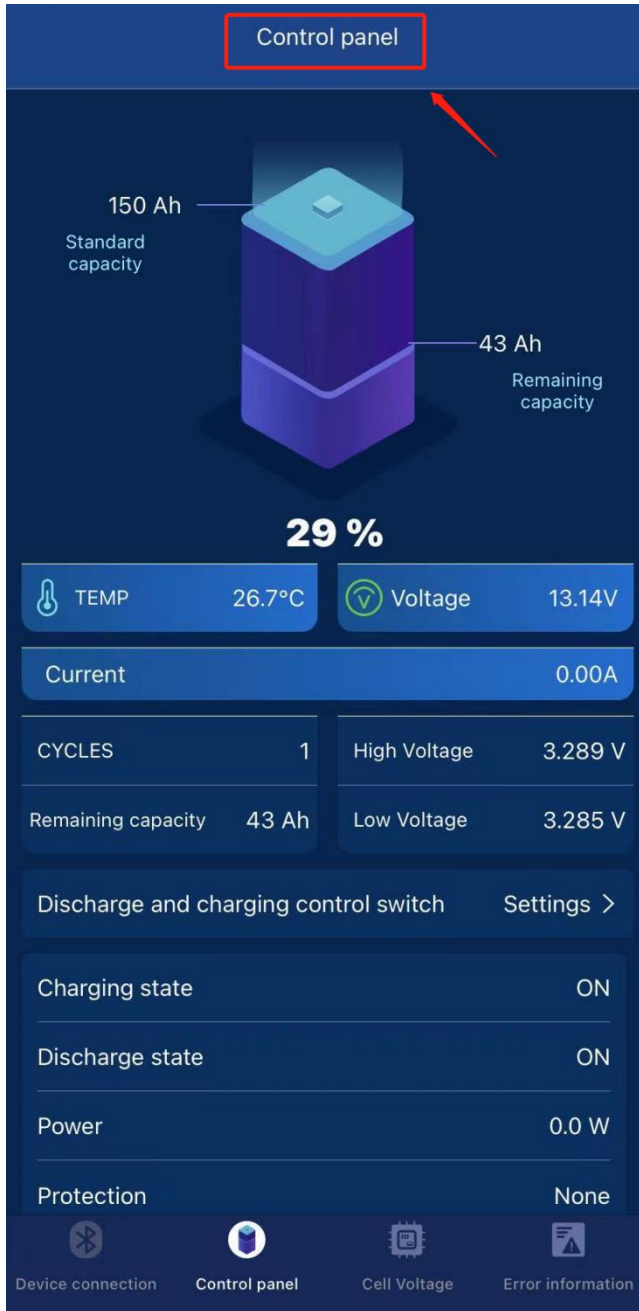
**STEP 1:** Uninstall the Bluetooth APP on your phone, and scan the QR code to download the APP again.



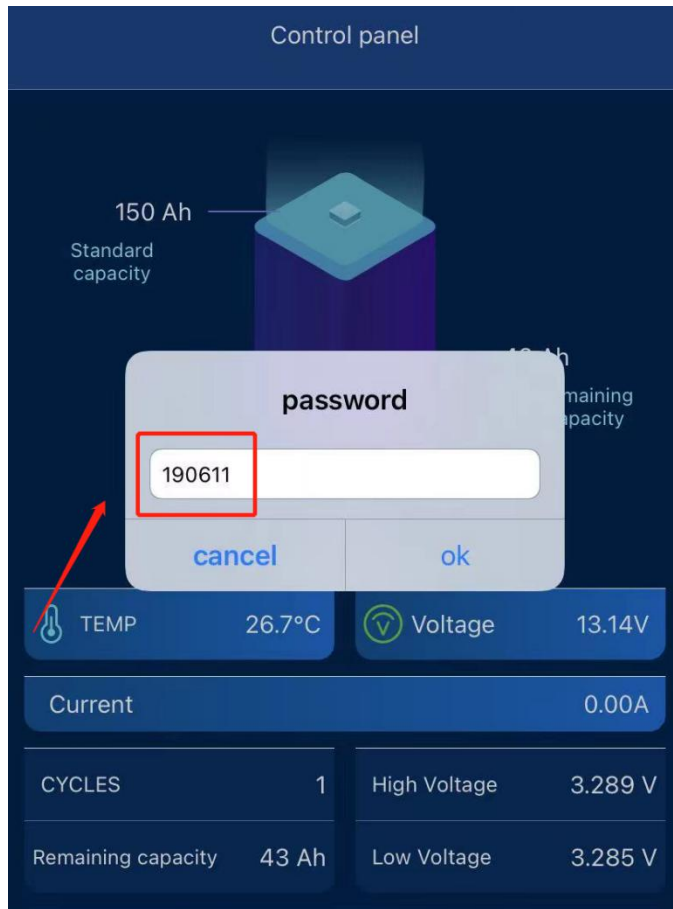
**STEP 2:** Turn on the **UltimatronFrance APP** and the Bluetooth, then connect your battery.



**STEP 3:** Press and hold the "**Control Panel**" for 3-5 seconds, then release your finger.



**STEP 4:** There will be a page like the picture below. And then you need to enter the password **190611**.



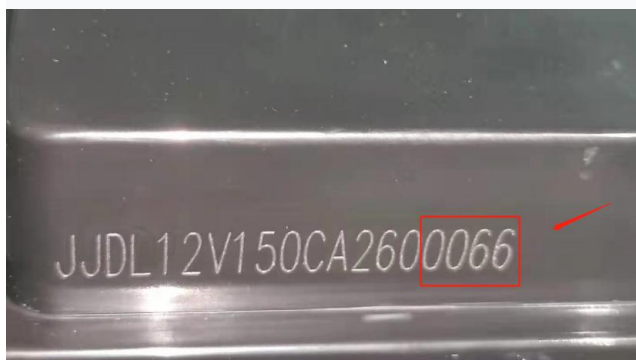
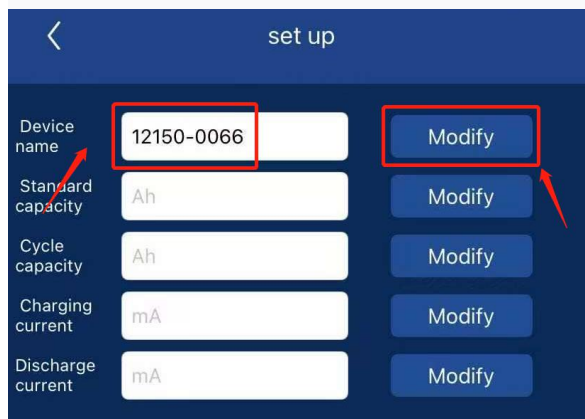
**STEP 5:** It will be a setting page shown like the following picture. And then you need to enter the code.

For example :

Your battery model is **12.8V 150AH**, and the last 4 battery numbers on the top left of the battery shell are: **0066**

Please enter "**12150-0066**" in the device name box, then click "**Modify**".

When "**Success**" is displayed, the operation is successful.



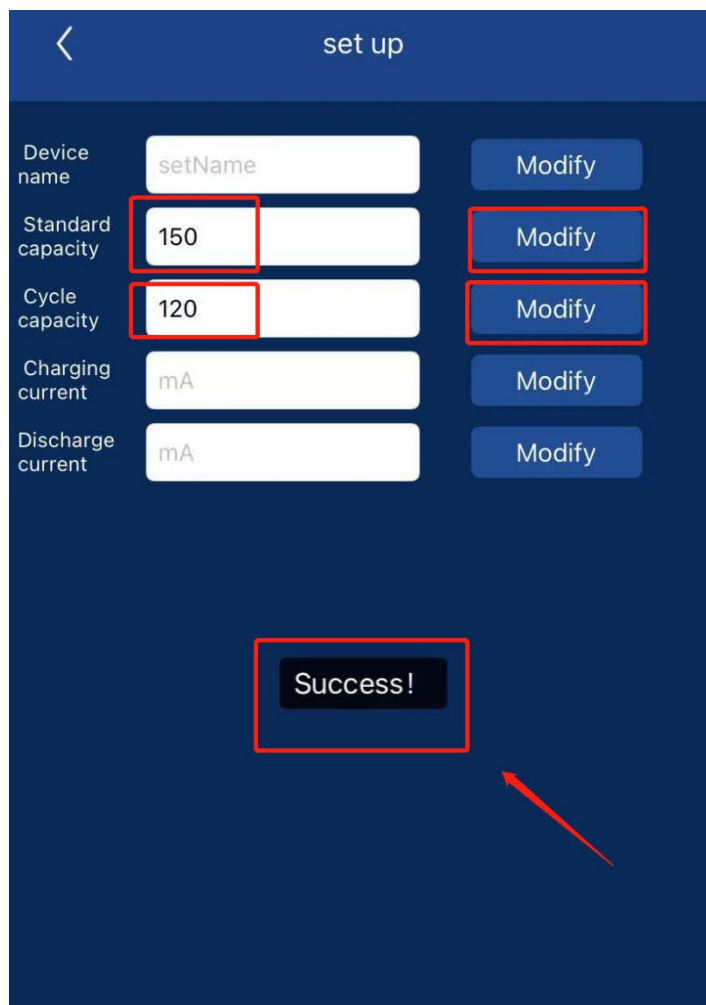
## STEP 6: Calibration of Capacity

① Please enter "150" in the box of Standard capacity, then click "Modify".

When "Success" is displayed, the operation is successful.

② Please enter "120" in the box of Cycle capacity, then click "Modify".

When "Success" is displayed, the operation is successful.



The screenshot shows a 'set up' screen with a dark blue background. At the top left is a back arrow, and at the top center is the text 'set up'. Below this are five rows of settings, each with a label, a text input field, and a 'Modify' button. The 'Standard capacity' and 'Cycle capacity' rows are highlighted with red boxes. The 'Standard capacity' input field contains '150' and its 'Modify' button is also highlighted. The 'Cycle capacity' input field contains '120' and its 'Modify' button is also highlighted. Below these settings, a black box with the text 'Success!' is highlighted with a red box. A red arrow points from the bottom right towards the 'Success!' box.

Setting	Value	Action
Device name	setName	Modify
Standard capacity	150	Modify
Cycle capacity	120	Modify
Charging current	mA	Modify
Discharge current	mA	Modify

Success!

## STEP 7 : Calibration of Current

① When you are **charging** the battery :

For example, the current measured by the multimeter is **25 A**, please entre **25000** mA in the box of Charging current, then click "**Modify**".

When "**Success**" is displayed, the operation is successful.

② When you are **discharging** the battery :

For example, the current measured by the multimeter is **25 A**, please entre **25000** mA in the box of Discharging current, then click "**Modify**".

When "**Success**" is displayed, the operation is successful.

*Note: Charging or discharging cannot be stopped during the operation ① or*

*②. After it shows "Success", you can stop charging or discharging.*

The screenshot shows a mobile application interface for battery setup. The screen is titled "set up" and has a dark blue background. It contains five rows of input fields and "Modify" buttons:

- Device name: setName (input field), Modify (button)
- Standard capacity: 150 (input field), Modify (button)
- Cycle capacity: 120 (input field), Modify (button)
- Charging current: 25000 (input field), Modify (button)
- Discharge current: 25000 (input field), Modify (button)

The "Charging current" and "Discharge current" input fields and their corresponding "Modify" buttons are highlighted with red boxes. Below the input fields, a "Success!" message is displayed in a black box, also highlighted with a red box. A red arrow points to the "Success!" message.

**STEP 8** : Do a complete charge and discharge cycle of the battery to make BMS learn the battery better.

First discharge the battery until the battery automatically stops discharging, and then fully charge it until the battery automatically stops charging.

*Note: When the APP capacity is displayed as 100% or 0%, please do not stop charging or discharging, it needs to wait until the battery automatically stops charging or discharging.*

**STEP 9** : After completing all the above steps, the monitoring data of the APP will be more accurate.

**If you have any questions,  
please do not hesitate to contact us:  
[info@ultimatron-france.fr](mailto:info@ultimatron-france.fr)**